

Hercules M Modem Installation Guide

1. Park machine on a level surface away from obstacles and moving machines. Secure all locks to make sure the machine is safe for work.
2. Locate the John Deere M Modem and RDO wiring harness for this install. *Please make sure the machine serial number on the Modem box matches your machine. Modems are preassigned to machines*



3. Open the Battery and Controller compartment on the machine.



4. Inside the battery compartment is a Grey 6-pin Deutsch connector. This should be located below the "Engine Data Connector" label. Remove the plug.



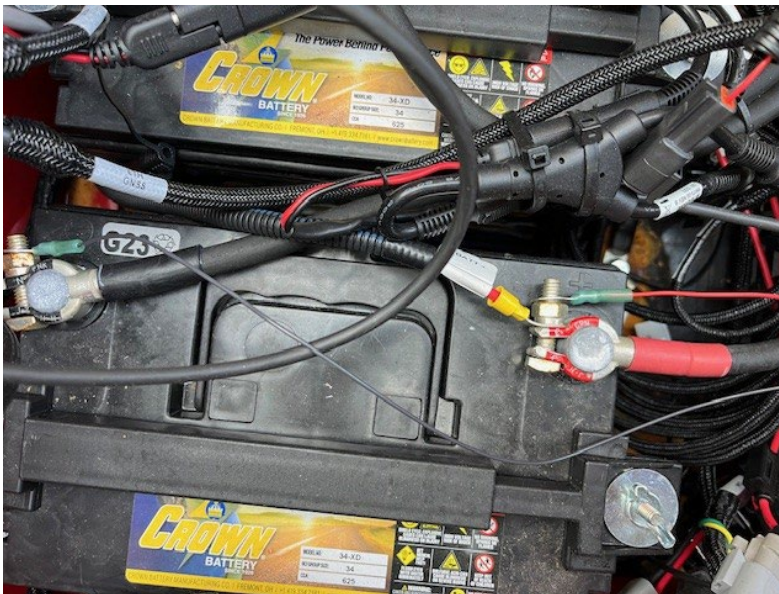
5. Connect the mating Deutsch connector on the RDO harness into the engine data harness.



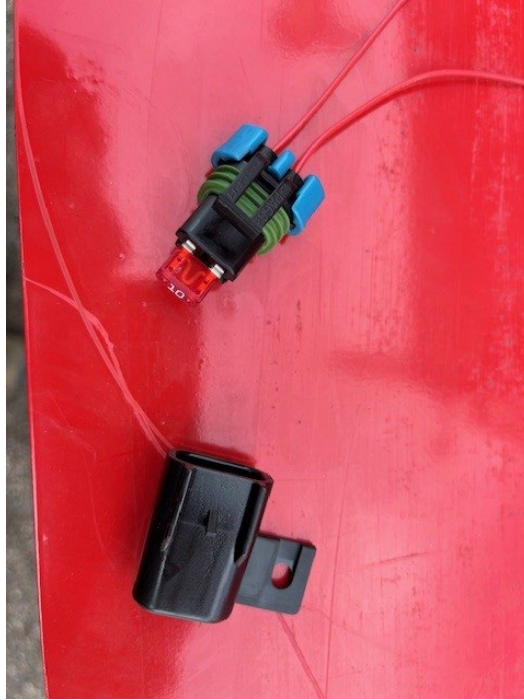
6. Plug the RDO wiring harness to M Modem and place the Modem next to the Trimble Controller using the 3M adhesive tape on the bottom of the Modem. ***Make sure the surface has been cleaned with glass cleaner or similar fluid to remove dirt/debris***



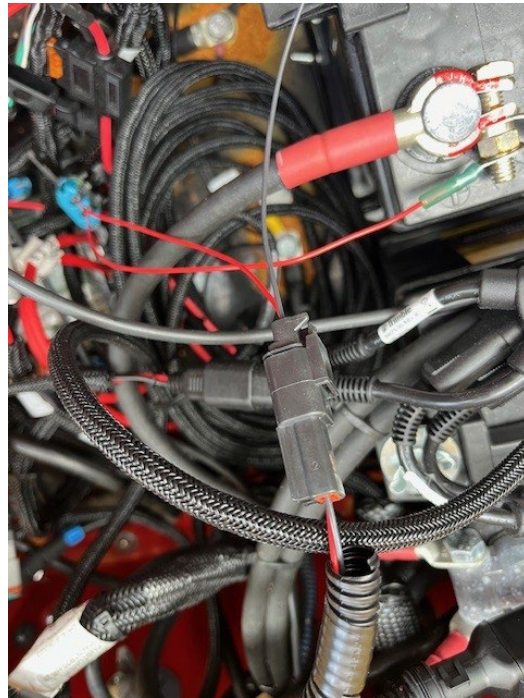
7. Connect the power portion of your RDO harness to the machine's batteries in a 12V configuration using the provided ring terminals. Terminals will need to be heated to seal the heat shrink.



8. Verify the 10-amp fuse on the power side is present and seated properly.



9. Connect the two-pin power connector from the battery harness to the RDO wiring harness.



10. Verify your modem is flashing Blue, Green and White lights. This indicates the modem has power and is going through its pairing process. Run the machine for 10 minutes.
11. Please contact the RDO Connected Support Center at 844-551-0390 or ConnectedSupport@RDOEquipment.com to verify JDLINK operation and hours.