

26P-60P and 26G-60G M Modem Install guide

1. Fill out Telematics setup form prior to setup (found on Offutt place under Connected Support Center). Ensure M-Modem stock # located on the parts box of the M-Modem is correct by pulling up CDK equipment profile and looking at serial # of M-Modem. If stock # is incorrect on the box-use the correct stock # found in CDK for the serial # physically found on the M-modem (see below).



2. Pull machine to safe area and lower boom/blade to the ground to prevent movement.
3. Open the Hydraulic/fuel compartment (A) and the Cooler compartments (B) to provide access to install the JDLink kit.



4. Verify Serial numbers for the machines match the breaks below. If your machine falls outside of the serial break, the M Modem can still be installed, but will require additional work. Please see Mini Excavator install guide addendum at the end of this guide.

All 26P – 60G

60G - 295816+ - 2022-09-09+ (engine CAN only)

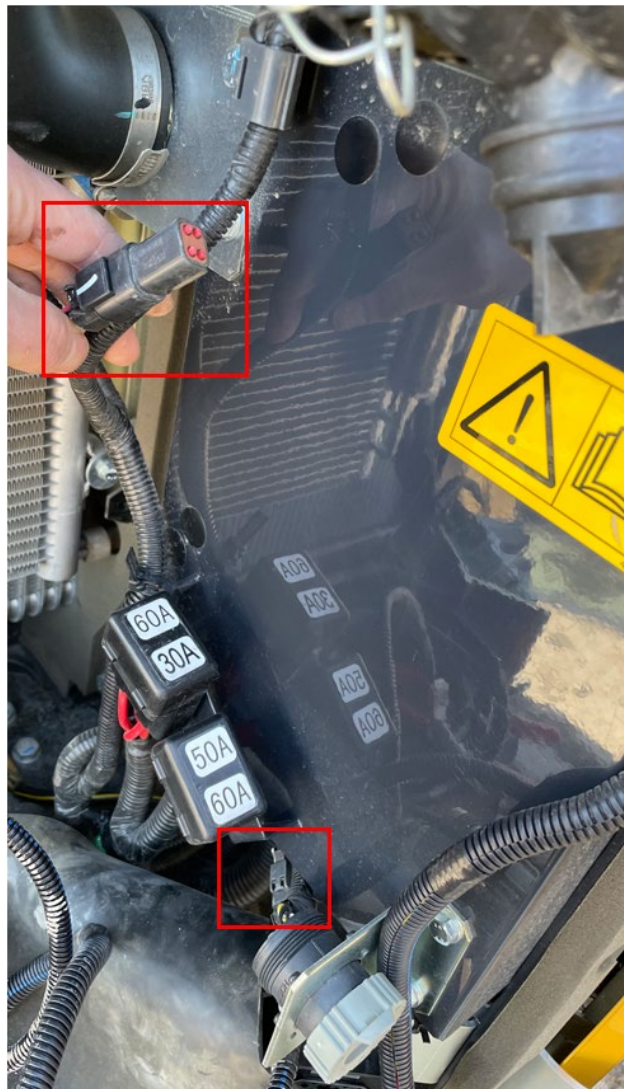
50G - 297703+ - 2022-09-05+ (engine CAN only)

35G - 299766+ - 2022-09-07+ (engine CAN only)

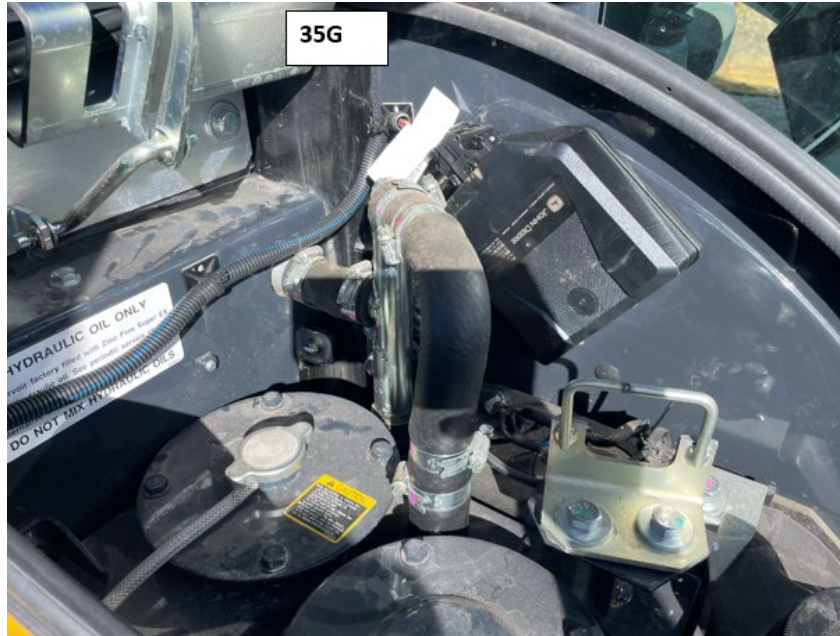
30G - 269055+ - 2022-09-09+ (engine CAN only)

26G - 268898+ - 2022-09-07+ (no CAN)

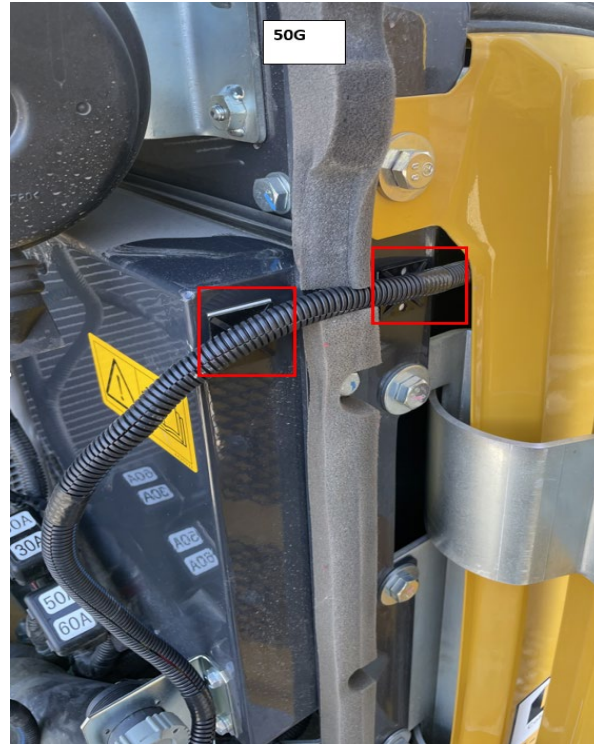
5. After confirming your machine falls within the serial break, locate the connectors in the picture below.



6. Use glass cleaner to clean and remove any residual contaminants from the side of the hydraulic compartment nearest the cab. Additionally clean any surfaces that a zip tie mount will be placed. Mount M-Modem-as shown below. For 50 & 60G machines cut away the foam insulation big enough for the M-modem to fit inside the hydraulic compartment nearest the cab.



7. Route the cable starting in the hydraulic oil compartment-run the cable through the door hinge of the radiator/battery door. Pull all slack cable into the radiator compartment area. For the 50G-Use the Zip tie adhesive plates to secure the cable on each side of the foam. For the 35G's cut a slit into the thick foam and feed the cable through the foam in the same location as shown below.



8. Make sure all wiring is tidy and secure away from hot points, pinch points and not obstructing radiator air movement. Use all zip tie adhesive plates. ***Be sure to use heat shrink wire nut ends if both plug-in ports are not available***



9. Move machine away from building; exposed to un-obstructed sky and let machine run for at least 15 minutes. Ensure modem has a Blue, Green, White light sequence before buttoning machine up. Contacted Connected Support by Phone or email to verify machine operation.

Connected Support – 844-551-0390 or ConnectedSupport@RdoEquipment.com

Mini Ex Serial break Addendum –

If the machine falls outside of the serial breaks at the start of this guide, additional wiring steps will be needed to make this kit work.

1. Follow steps 1-7 above. There should be a 3 prong plug left over. This will be for the Switched power, Ground and Constant power.
2. Cut the plug off the wiring harness. Strip the look back to expose the needed wiring.
3. Run the Power and ground to the battery in the cooler compartment. Use Heat Shrink ring terminals for this application.
4. Next remove the Switched Wire in pin “B” of the 9 pin Service advisor diagnostic port.
5. Remove the terminal from the wire and splice the switched power wire from the M Modem harness. Using a new pin, crimp the new terminal onto the pair of wires. Reinstall double pinned terminal into the service advisor port.
6. Secure any excess wire or remove excess loom to prevent damage.

